

MOUNTAINSTAR PHASE 1, DIVISION 2 (PLAT ALTERATION)

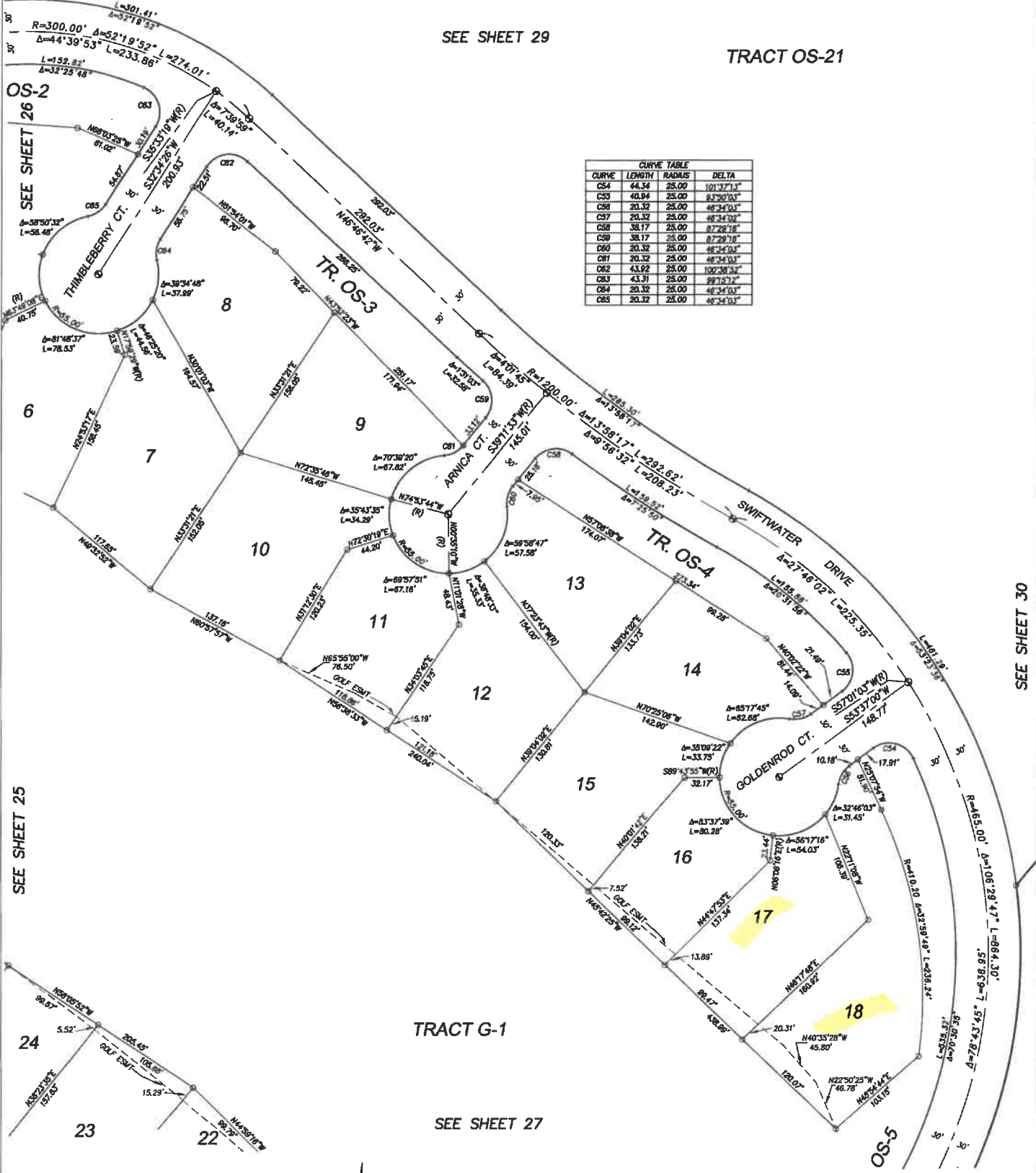
NE, SW AND SE 1/4'S OF SECTION 19, NW AND SW 1/4'S OF SECTION 20, NW 1/4 OF SECTION 29, NE 1/4 SECTION 30, ALL IN TOWNSHIP 20 NORTH, RANGE 15 EAST, W.M.

RECEIVING NO.

200506160038

SEE SHEET 29

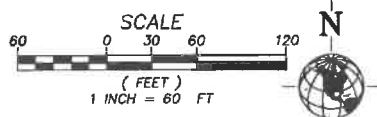
TRACT OS-21



CURVE TABLE			
CURVE	LENGTH	RADIUS	DELTA
C54	44.34	25.00	101°37'13"
C55	40.94	25.00	83°30'03"
C56	20.32	25.00	45°24'03"
C57	20.32	25.00	45°24'03"
C58	38.17	25.00	87°28'18"
C59	38.17	25.00	87°28'18"
C60	20.32	25.00	45°24'03"
C61	20.32	25.00	45°24'03"
C62	43.92	25.00	100°38'32"
C63	43.31	25.00	99°15'12"
C64	20.32	25.00	45°24'03"
C65	20.32	25.00	45°24'03"

SEE SHEET 25

SEE SHEET 30



- LEGEND:
- (R) RADIAL BEARING
 - ⊙ EXISTING MONUMENT
 - ⊙ CENTERLINE MONUMENT
 - PROPERTY CORNER, SET REBAR & CAP, LS 33148

- GOLF:
- G - GOLF
 - OS - OPEN SPACE
 - PB - PERIMETER BUFFER

WHPACIFIC
 3350 MONTE VILLA PARKWAY
 BOTHELL, WASHINGTON 98021
 WWW.WHPACIFIC.COM
 TEL: (425)951-4800 FAX: (425)951-4808
 Planning • Engineering • Surveying • Landscape Architecture

SHEET 28 OF 31

VOLUME/PAGE
 9 - 184

9-18